



International Joint Research Center for Environment and Sustainable Development of the Mongolian Plateau Region



Mission:

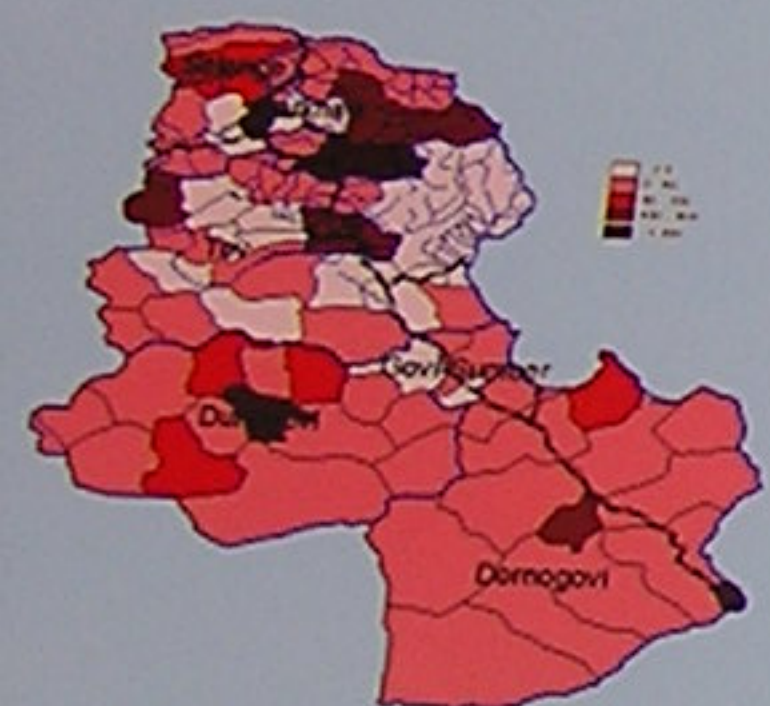
The Joint Research Center will, in general, promote integrated humanland system-terrestrial ecosystem-environmental research, have a supporting and coordinating role and provide coordination, leadership and capacity building on environmental and sustainability sciences in the MP and to the larger region of the North-east Asia and the world.

Objectives:

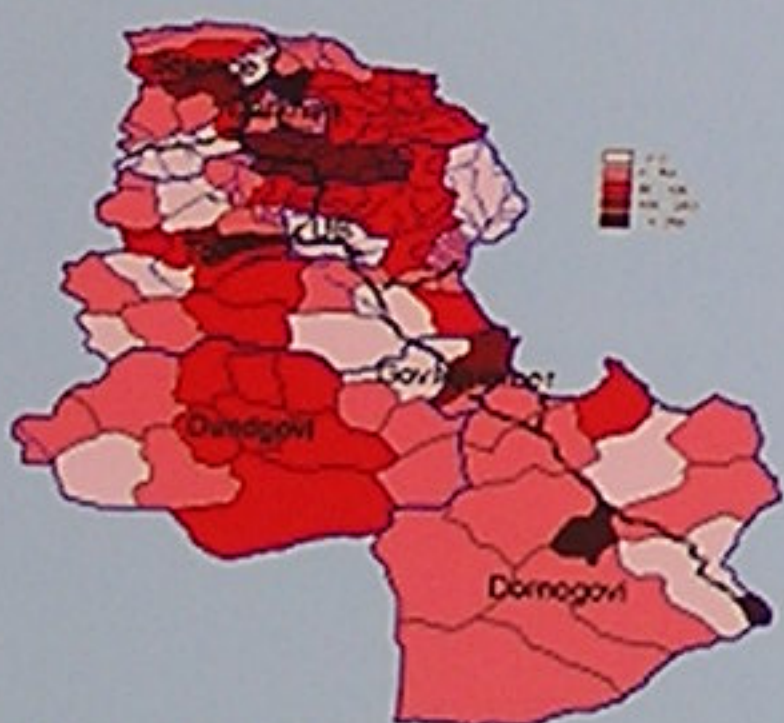
- Geo-information for decision-making and regional SD
- Man-land-ecosystem-environment interactions
- Academic exchanges and personnel capacity building
- Coordination and communication of research activities in the MP

Long term collaboration programs:

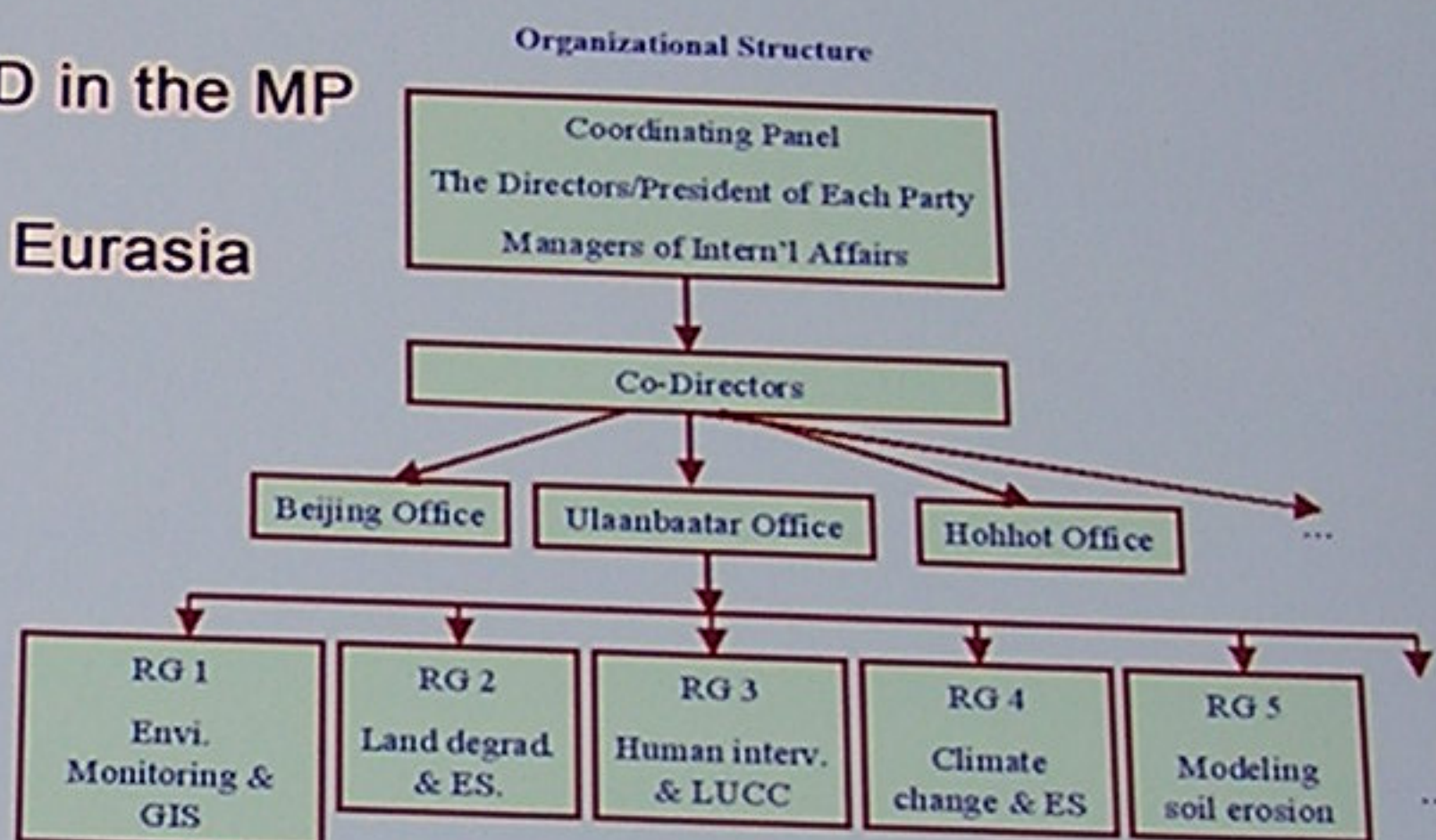
- Focus: Man-land-ecosystem interactions, environmental risks and SD in the MP
- Time frame: propose new programs every two years
- Spatial coverage: MP, extending to transition zones across Northern Eurasia



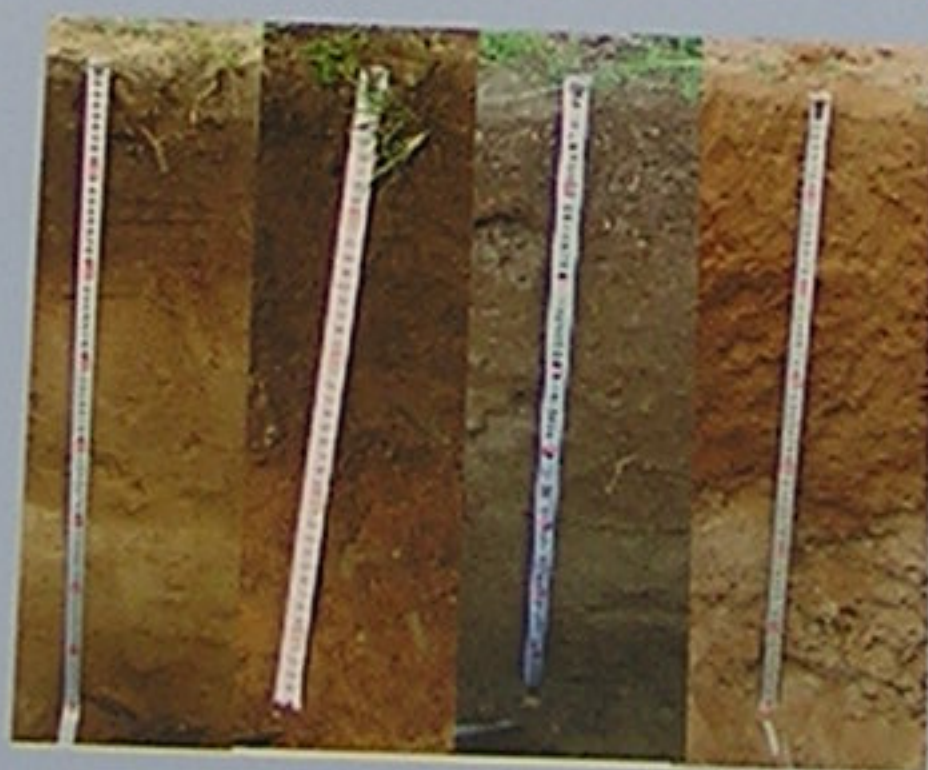
Population Changes (%) in 1985-2004 of Study Area



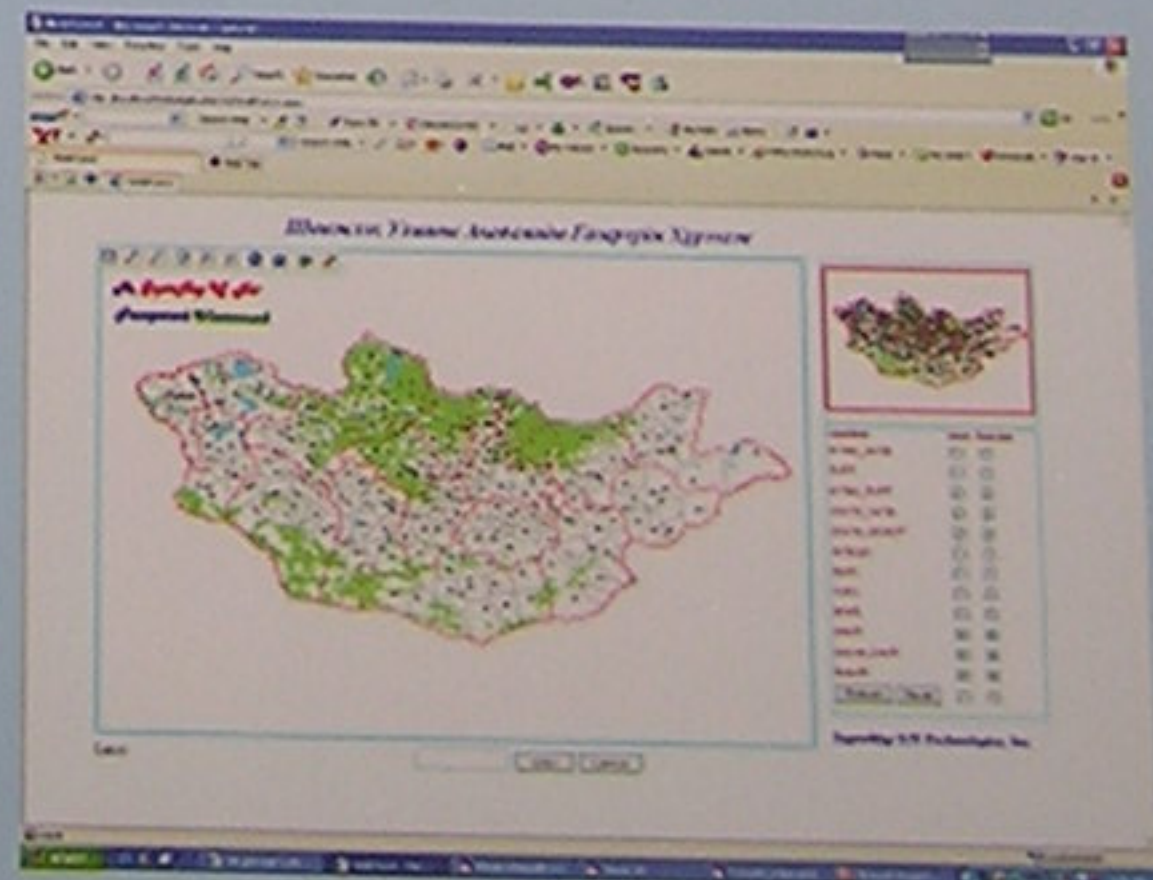
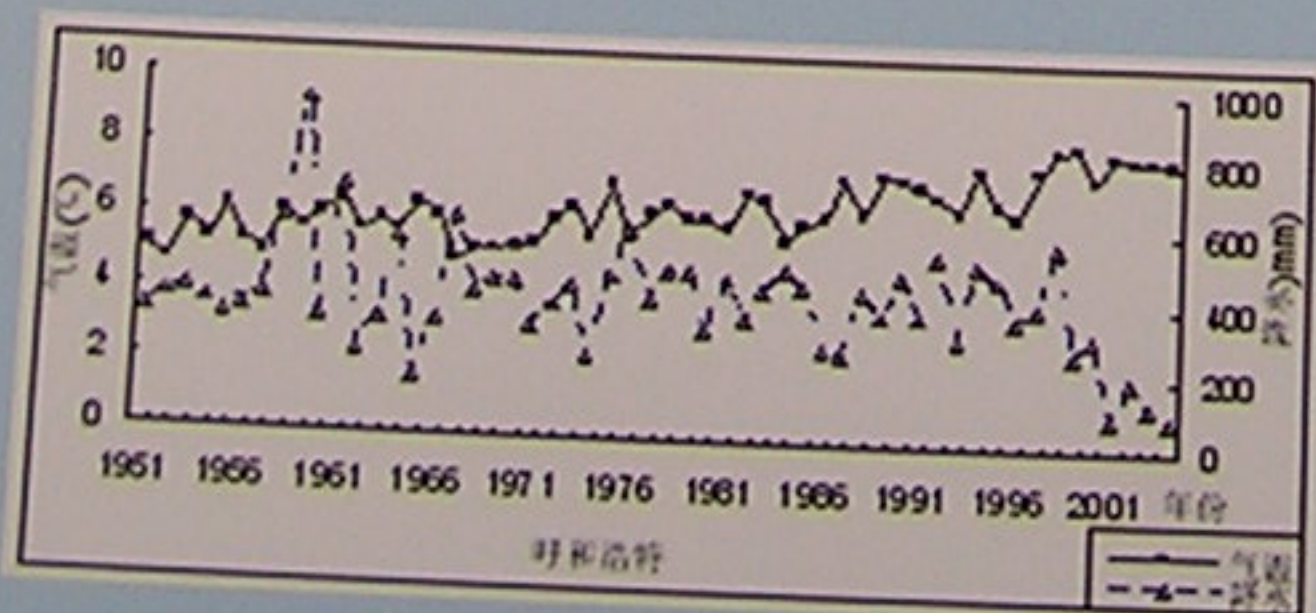
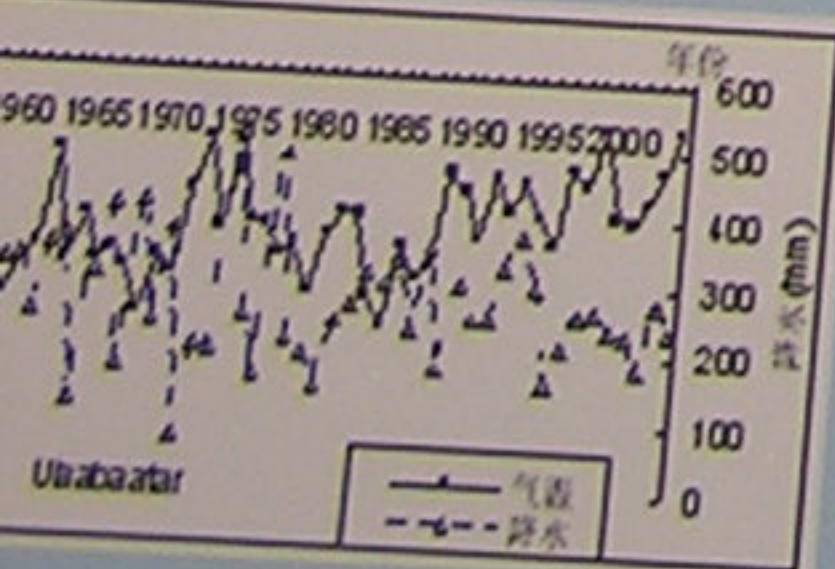
Livestock changes (%) in 1985-2004 of Study Area



	Answers	Responses (%)				
		1	2	3	4	5
Conditions	①Improving ②Degradation	32	68			
Wasteland	①Fodder ②Soil Cons. ③Landscape beauty ④Unknown	22	15	44	19	
Migration	①Y ②N	83	17			
Land Cons.	①Y ②N ③NI	15	74	11		
Opinions	①Know ②Unknown	13	87			
	①Migration ②limited LS ③Eco-tourist ④Eco-crops ⑤As it is	2	4	21	21	52



Land degradation mechanism



Products from SuperMap GIS training