

SuperMap[®]

GIS Training Program for Mongolian Young Scientists

Introduction

From May 22 to July 22, 4 Mongolian Young Scientists from Institute of Geography, Mongolian Academy of Sciences (IG, MAS) attended a two-month GIS Training Program hold by Institute of Geography and Natural Resources Research, Chinese Academy of Sciences (IGSNRR, CAS). This program is co-sponsored by SuperMap GIS Technologies, Inc, a leading GIS producer supported by IGSNRR, CAS.



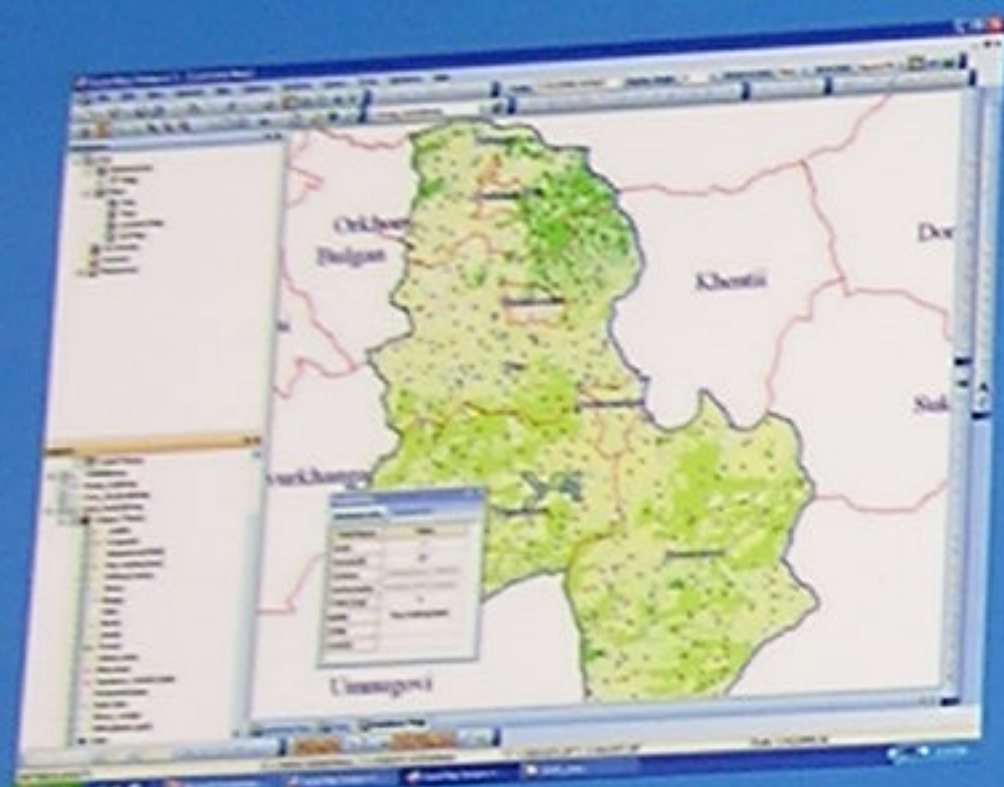
The Opening Ceremony

Background

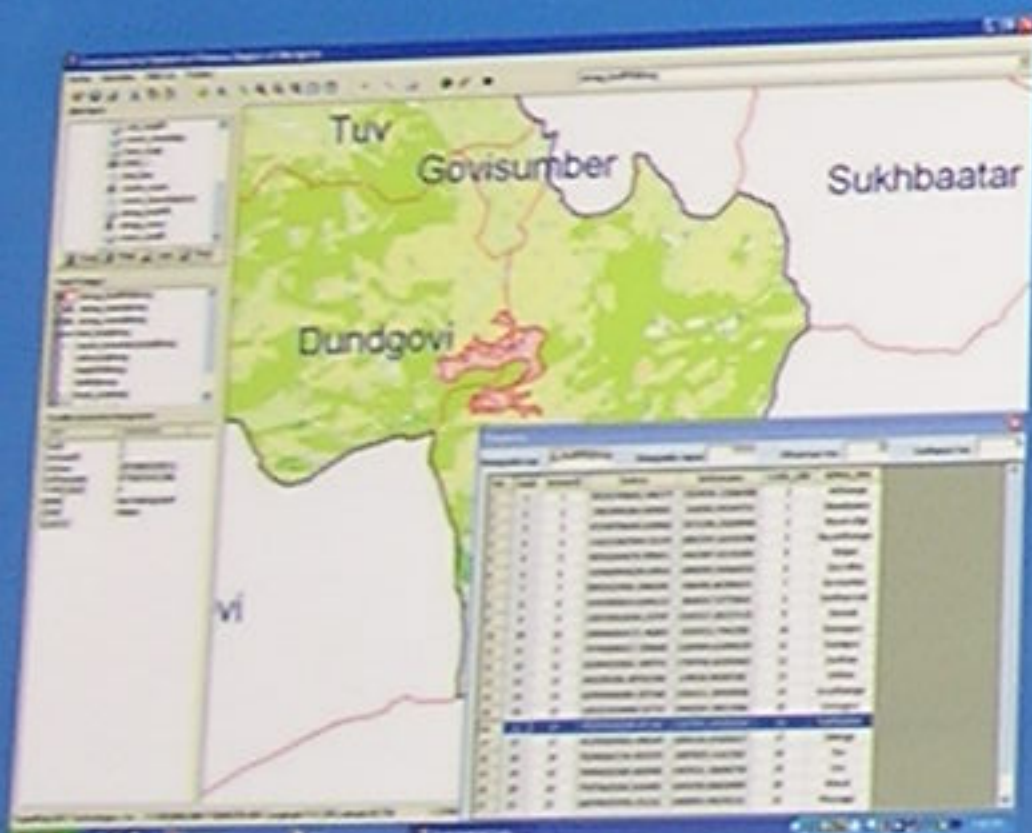
The program is one of the important part of the science and technology cooperation between CAS and MAS, which aims to help surveying, planning and managing the natural resources, energy and ecology of the neighboring countries and is highly recognized by the leaders of the both sides. After several times of visiting and discussion, the two sides reached an agreement on helping Mongolia with their GIS ability construction, as well as setting up a Joint Research Center for the Sustainable Development of Mongolian Plateau. This program is just a beginning of the cooperation.

About SuperMap

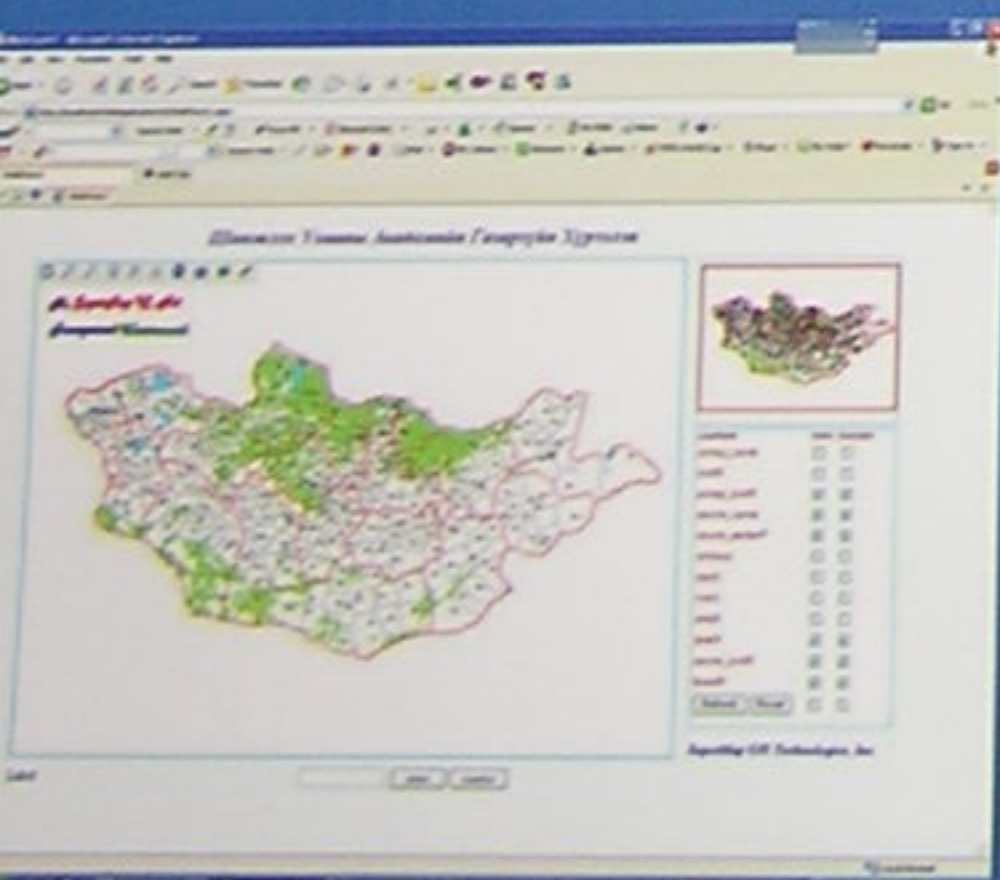
SuperMap GIS Technologies, Inc. is a leading GIS company in China, specializing in the development of GIS software platform. With the support from the Chinese Academy of Sciences, SuperMap has been devoted to geospatial technological innovation and has developed a series of GIS Products--- SuperMap GIS. The products have been widely used in almost all the spatial related industries, and hundreds of large scale systems are in operating now in home and abroad.



Digital Map done by participants with SuperMap Desktop



Demo system developed by participants with SuperMap Objects



Demo system developed by participants with SuperMap IS .NET

SuperMap GIS Technologies Inc

Add: 7F, Tower B, Technology Fortune Center
No. 8, Xueqing Road, Haidian District,
Beijing, PRC, 100085
Tel:86-010-82736655-8000
Fax:86-010-82734630
Email: sales@supermap.com
Website:Http://www.supermap.com