

# NEESPI FRC DRYLANDS

Jiaguo Qi

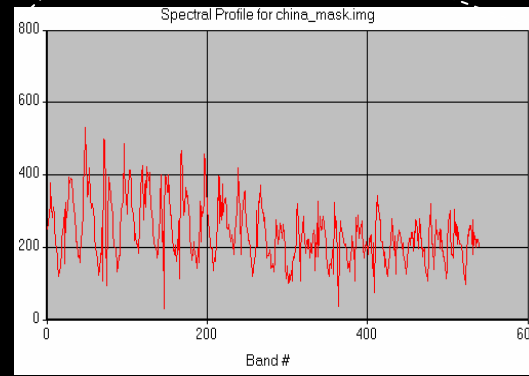
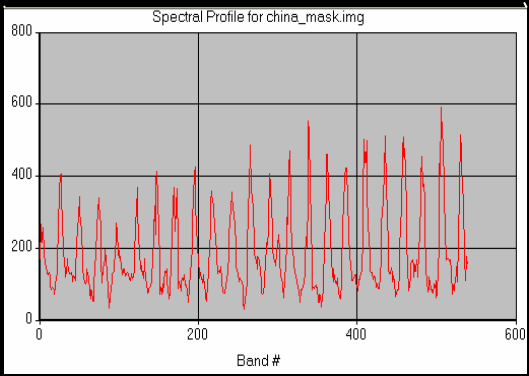
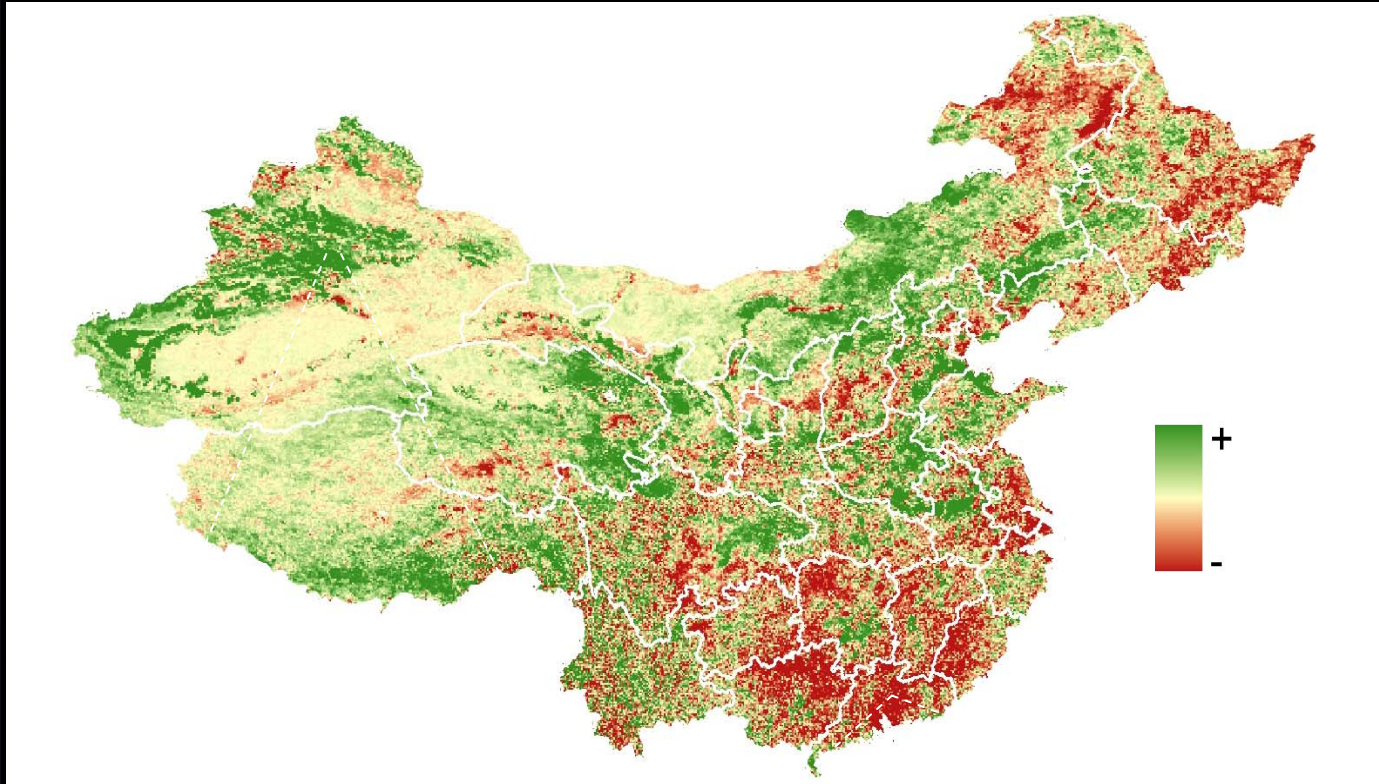
Center for Global Change and Earth Observations

Michigan State University

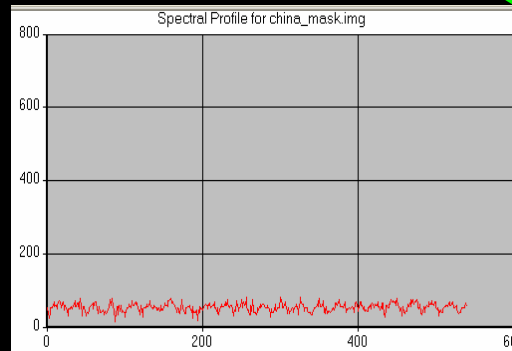
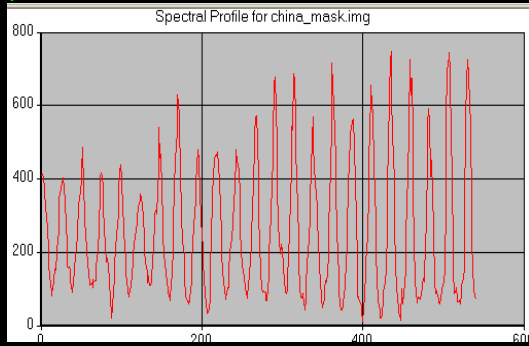
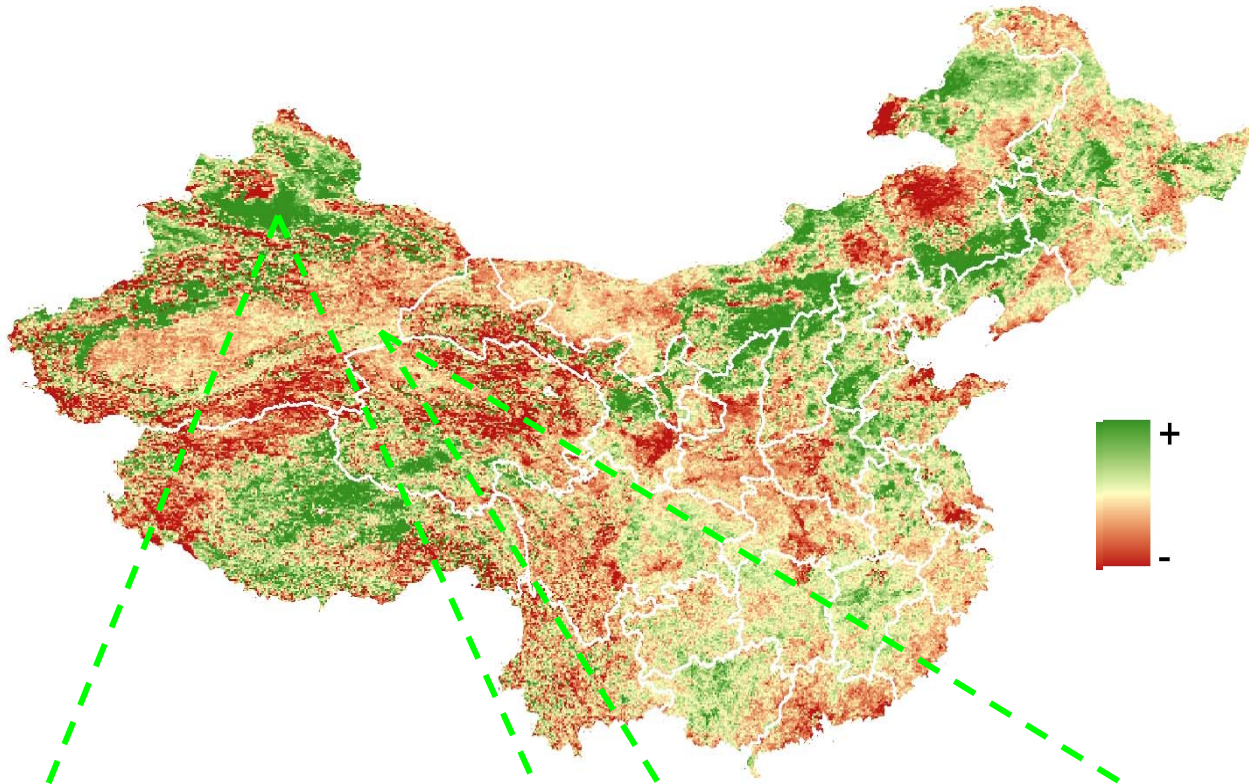


**WELCOME TO NEESPI FRC  
BEIJING, CHINA**





**Trend in  
Vegetation  
from 82-03**



**Trend in Vgt.  
Variability  
from 82-03**



Desertification



Salinization



Degradation



# So, why arid regions?

- High population density
  - Concentration of developing countries
- Vulnerable to human perturbation and climate change
  - Fragile ecosystems and sensitive to CC
- Easy to reach to tipping points
  - Marginal lands and intensive exploitation



## Effort needed:

- Quantify the interactions among various components of the couple human and natural systems
- Improved policy and resources management practices